



***PAWS of Bainbridge Island
Cat Adoption
Program Summary
2004***

prepared by Marylou Zimmerman, Cat Adoption Coordinator



In 2004, PAWS found homes for 316 cats and kittens. Over the year, the adoption program took in 321 cats and kittens from various sources: owners relinquished, feral kittens (through the PAWS “In From the Wild,” or IFTW, program), found or stray cats (i.e., cats that obviously have been pets but no owner can be found), and as assistance to other rescue groups, such as the Kitsap Humane Society (KHS), PAWS of Bremerton and Rescue Every Dog (RED). The majority of cats from KHS were nursing mothers. We were happy to be able to provide this service to other organizations and were able to do so because of the reduced number of litters turned in to PAWS, perhaps due to the success of our free and low-cost spay/neuter program. Following is a breakdown of each litter by origin:

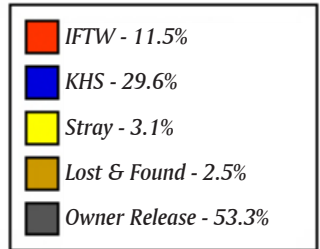
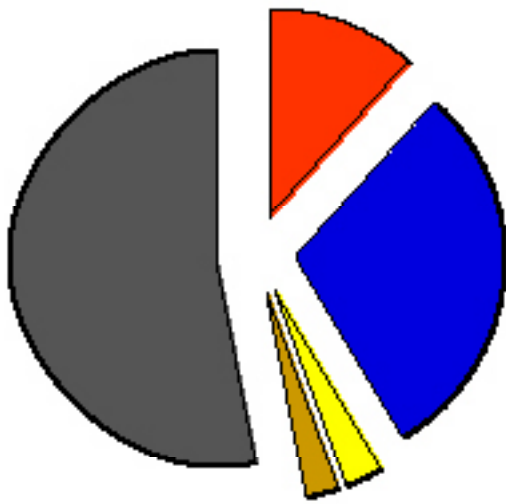
Year	Owner Relinquish	IFTW	KHS/other agency	Total
2000	77	7	1 (PAWs Bremerton)	85
2001	62	7	1 (KHS)	63
2002	47	25	0	72
2003	63	5	3	71
2004	20	10	23 (KHS & R.E.D.)	53

It should be noted that no litters of kittens were turned away because of overcrowding. In past years, we have had to refer owners to other agencies if they were not in our service area or our foster homes were full.

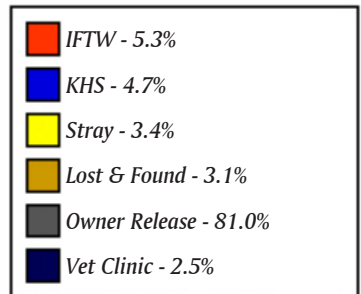
As in previous years, the number of intakes does not include kitten mortality figures. This year, kitten mortality was lower than in previous years, due in part to the elimination of a feral cat colony on Bainbridge that had produced many kittens with FIP. Foster homes also helped prevent illness by keeping litters separated to decrease the spread of contagions. Our biggest veterinary issue this year was coccidia which occurred in a large percentage of all kitten intakes this year.



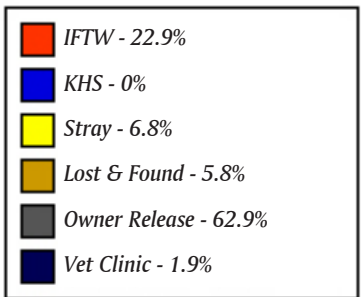
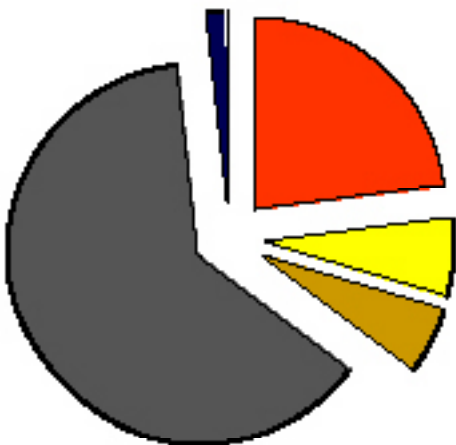
The following diagrams compare origin of all cat adoption intakes for the past five years:



Sources of Program Cats
2004



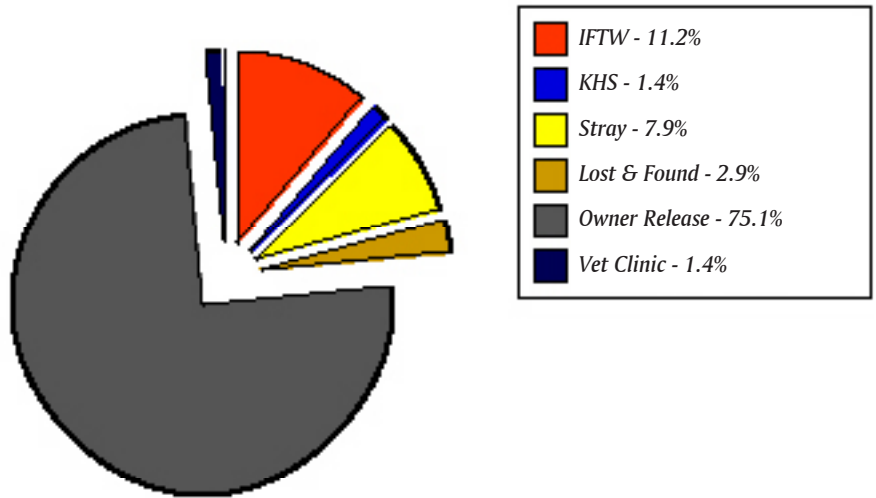
Sources of Program Cats
2003



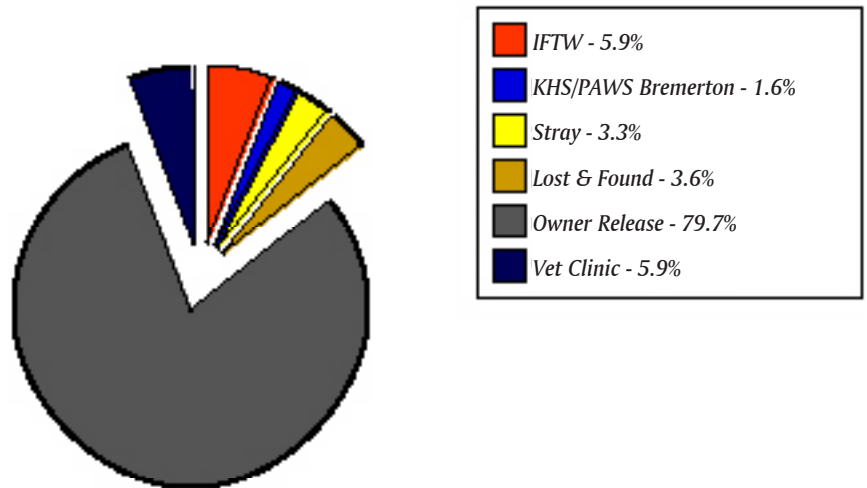
Sources of Program Cats
2002



Sources of Program Cats 2001



Sources of Program Cats 2000



In From The Wild- From Feral to Pet

The success of the IFTW program is heavily dependent on the age when the kittens are brought to PAWS and on volunteers who have the skills to socialize feral kittens. The number of these special volunteers is limited at this time. PAWS is lacking a Feral Cat Program coordinator and cannot address the feral cat problem to the extent we would like. An active public education program is needed to ensure that kittens are brought into the system when they're still young enough to be socialized and that all adults in a colony are sterilized to break the cycle of reproduction.



Adoption Patterns

Adoption during 2004 followed a pattern similar to previous years, where the spring has the fewest adoptions followed by a significant bulge during kittens season. This year saw a much later onset of kitten season than usual, due in part to weather conditions during the winter.

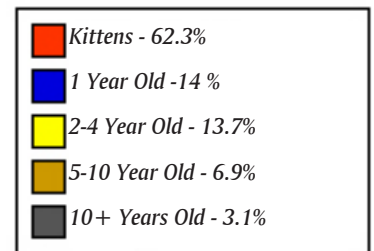
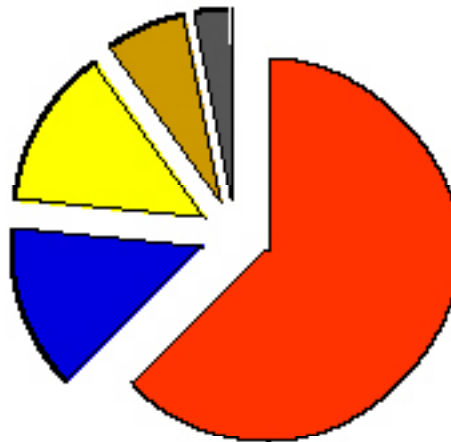
The impact of remodeling at The Cattery can be seen in the lower adoption numbers in April and May, reflecting the limitation of intakes in February and March. The drop off in adoptions in December is a reflection of both the quarantine of adults due to upper respiratory infections at The Cattery, and the hiatus from Paws & Fins prior to the holidays.

Adoptions By Month 2000-2004

	Jan	Feb	Mar	Apr	May	June	Jul	Aug	Sep	Oct	Nov	Dec	Total
2000	16	10	14	9	10	41	48	29	42	40	26	22	307
2001	13	11	10	1	14	22	31	36	30	25	32	34	259
2002	12	20	11	22	16	37	31	28	51	28	36	18	310
2003	38	8	8	16	21	25	24	43	48	37	28	25	321
2004	24	9	17	6	6	18	41	36	43	58	46	17	321

Age of Adopted Cats 2004

As is typical, the bulk of adoptions (62%) were kittens. This compares to previous years as follows:



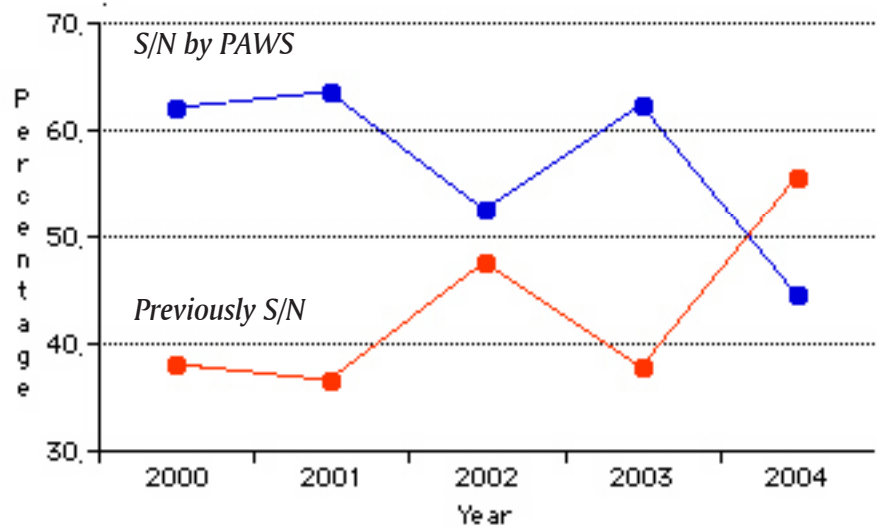
Age Breakdown of Adoptions 2004

Year	# Adults	(percentage)	# Kittens	(percentage)
2000	103	(33.1%)	209	(66.9%)
2001	93	(33.6%)	184	(66.4%)
2002	133	(42.9%)	177	(57.1%)
2003	135	(42.1%)	186	(57.9%)
2004	121	(37.7%)	200	(62.3%)



Increase of Spay/Neuter

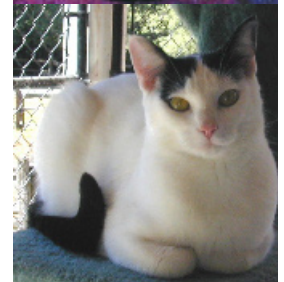
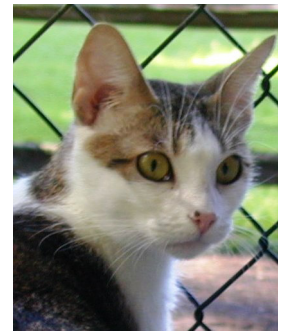
This year, we saw an increase in the number of adult cats that entered the system already sterilized, which helps keep the cost of the program down. We are hopeful that this phenomenon is indicative of the success of our free and low cost spay/neuter program and the public education on the importance of spay/neuter.



Year	Previously Spay/Neutered	Spay/Neuter by PAWS
2000	39 (37.9%)	64 (62.1%)
2001	34 (36.5%)	59 (63.4%)
2002	63 (47.4%)	70 (52.6%)
2003	51 (37.7%)	84 (62.2%)
2004	67 (55.4%)	54 (44.6%)

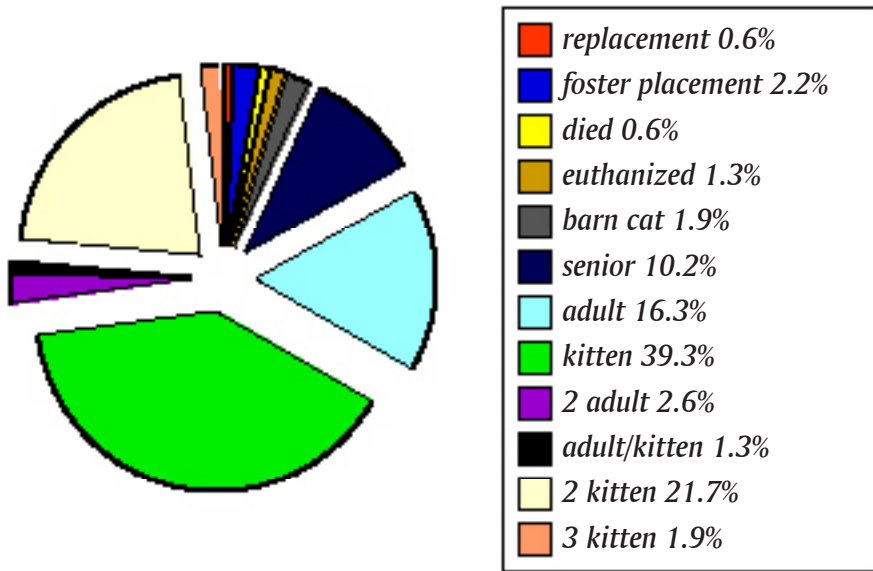
Sanctuary Cats

Occasionally PAWS is presented with intakes of cats who are, because of age, unadoptable. In the past we were unable to bring these cats into our program. The Cattery allows us to bring these cats into a Sanctuary Program. The cats are acclimated to The Cattery, where they are allowed to live out their lives with comfort, care and attention. Once the health of these cats deteriorates to a point where PAWS staff, in conjunction with our veterinarians, feel that they no longer experience an adequate quality of life, they are humanely euthanized. This year, we had to say goodbye to several Sanctuary Cats, including Bailey, Dudley, Sorta, Jesse, Stan, Simon and Columbo.



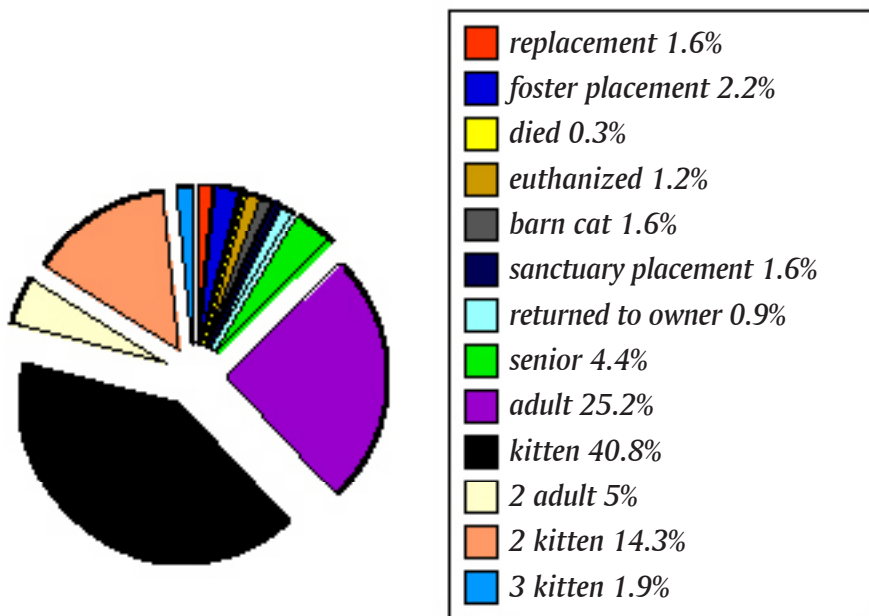
Adoption Fees

An analysis of adoption fees collected during 2004 reflects two potential trends: more adoptions of senior cats and an increase in the adoption of pairs of kittens by a single adopter. The former is due to an increase in elderly adopters as well as the introduction of a reduced rate (\$50) for cats over the age of five. The latter trend is perhaps a result of adoption counselors educating potential adopters to the benefits of kittens having companionship of another kitten.



2004 Adoption Fee Breakdown

fees-
 replacement - no charge
 foster placement - no charge
 (1 per year)
 barn cat- placed for donation
 senior - \$50
 adult - \$75
 kitten - \$85
 2 adult - \$125
 2 kitten - \$150
 3 kitten - \$215



2003 Adoption Fee Breakdown



Summary and Recommendations

2004 was a successful and exciting year for the PAWS of Bainbridge Cat Adoption Program. The Cattery, thanks to the continued generosity of the Jacobis, has grown into a smooth running, integral part of PAWS. The remodel at The Cattery, while disruptive for a few months, has provided our foster cats with a much more workable space. The addition of needed plumbing facilities, improved isolation area and ventilation system have created a facility that is easier to clean and maintain, allowing more time for socialization with the cats, and allowing for an increased overall census without unduly impacting the stress level of the cats. The improved communication provided by the addition of phone service has been integral in the completion of several adoptions of hard to place cats.

The growing cooperation between KHS and PAWS has led to better communication and much improved public perception of both organizations. The success of the PAWS programs in decreasing the prevalence of intact and actively reproducing animals in North Kitsap is beginning to show results in the intake statistics for kittens. The public face of the Adoption program continued to be in the media eye, thanks to the hard work of Pam Gidari, through the Pet of the Week program, and twice in the last year, full page ads sponsored by local businesses that featured many of our adoptable cats and kittens. PAWS also improved our presence on the Web, with updated listing and pictures of available animals and email contact with potential adopters.

The adoption program could not be nearly the success that it is without the extensive contributions of many community members. First are the dedicated veterinarians and their staff, who provide countless hours of services at reduced rates, as well as being available for consultation about health issues affecting the program. We are also indebted to them for their continued emphasis on the importance of spay/neuter with their clients. Paws & Fins Pet Store, and Wiccan York-Patten have been vital components of the PAWS Adoption Program. Without their contributions, the program could not exist on the scale it has reached today. From fielding questions, to providing floor space for adoption cages, to providing food for every adoption, they have consistently gone above and beyond the call to be of service to PAWS and the animal community. The many volunteers who provide untold hours of foster care, transportation, socialization, and adoption counseling has made our program a model for other agencies in the area. In fact, we were able to provide consultation and advice to assist in the formation of the Mason County Humane Society, a new animal welfare group in a desperately underserved area.

As we look forward to celebrating our 30th year of service to the animals of Bainbridge and North Kitsap, the adoption program has generated a lot of positive energy. Our plans for a stand-alone, colony-concept adoption center, will advance the PAWS Cat Adoption Program to a new level in 2005.

